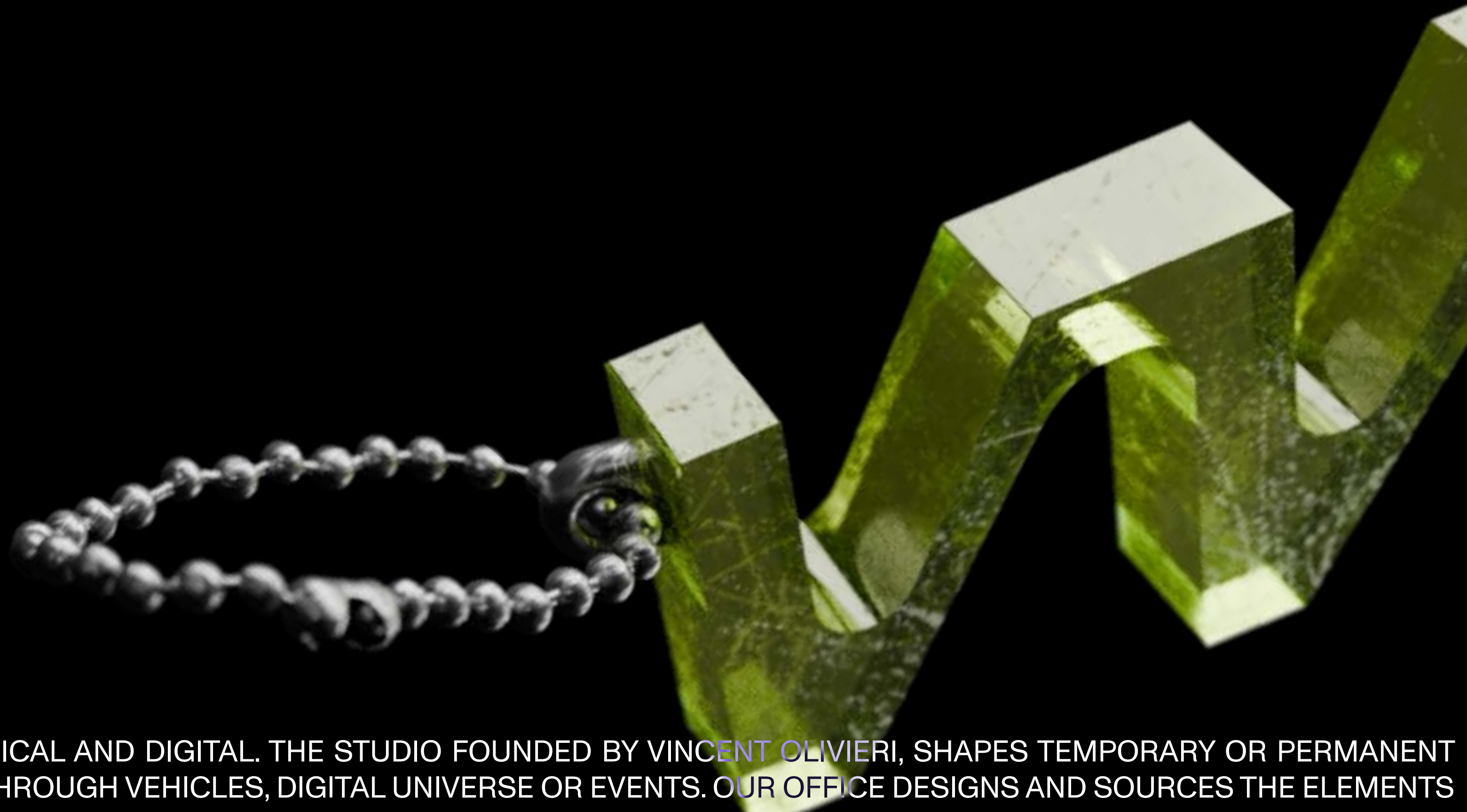


WORLD+



WORLD+ IS AN AREA WHERE WE GENERATE WORLDS BOTH PHYSICAL AND DIGITAL. THE STUDIO FOUNDED BY VINCENT OLIVIERI, SHAPES TEMPORARY OR PERMANENT SPACES, FIXED AS MOVABLES FROM SET AND INTERIOR DESIGN THROUGH VEHICLES, DIGITAL UNIVERSE OR EVENTS. OUR OFFICE DESIGNS AND SOURCES THE ELEMENTS THAT WILL COMPOSE THE SPATIAL ENVIRONNEMENT OF YOUR PROJECT. WE REGULARLY INVITE DESIGNERS TO JOIN THE STUDIO AND EXPAND OUR FIELD OF CREATION. OUR PRODUCTION FACILITIES WITH A DEDICATED TEAM TO THE SET UP AND THE TERRITORY WORKSHOP PROVIDES US A FAST AND EFFICIENT SOLUTION FOR THE GENERATION OF THE WORLDS.

AD462 VERSACE

Diplomats (PRODUCTION) + Vincent Catel (DIRECTOR)
+ Henri Pier (SET)

SET DESIGN



AD462 VERSACE

Diplomats (PRODUCTION) + Vincent Catel (DIRECTOR)
+ Henri Pier (SET)

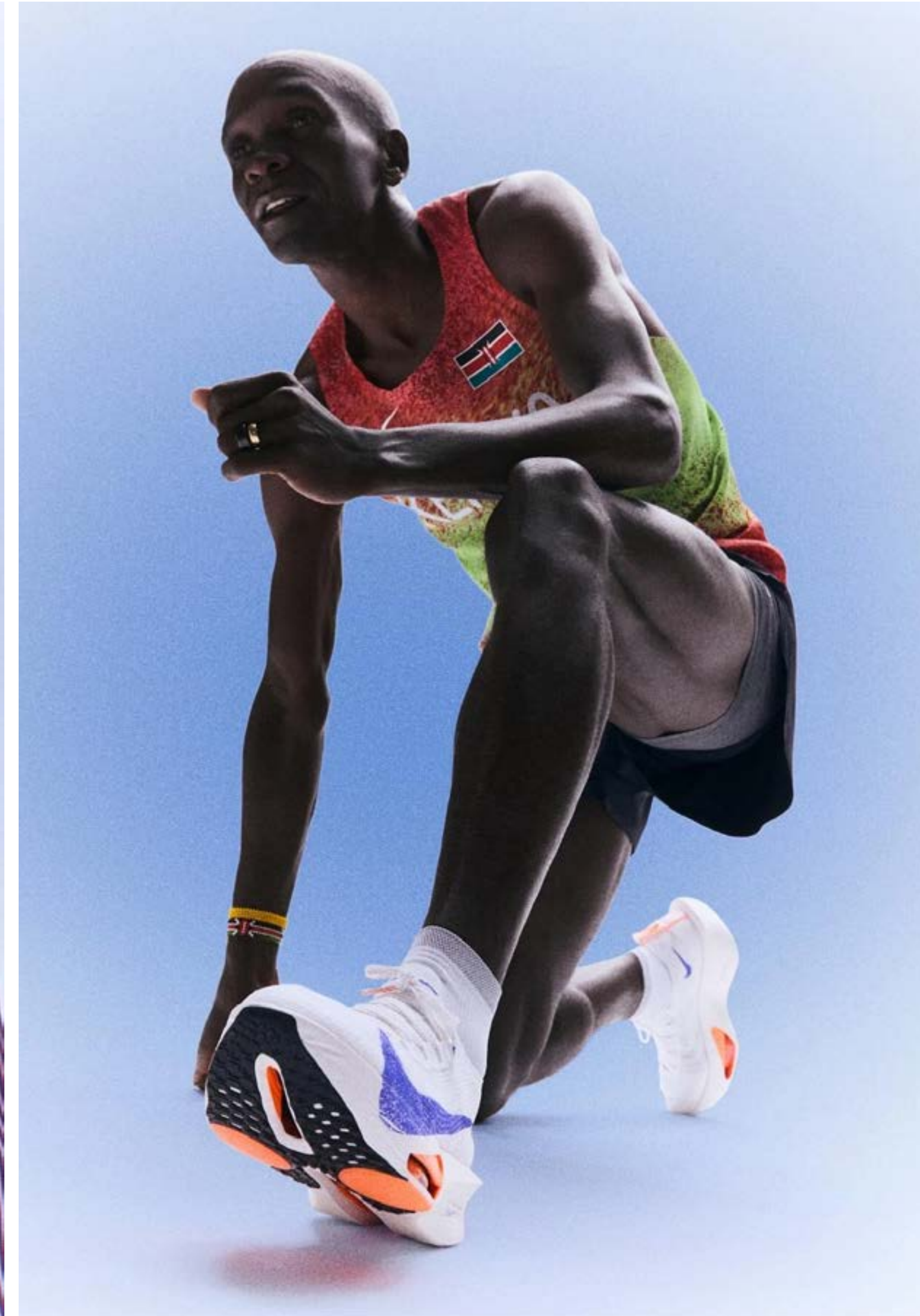
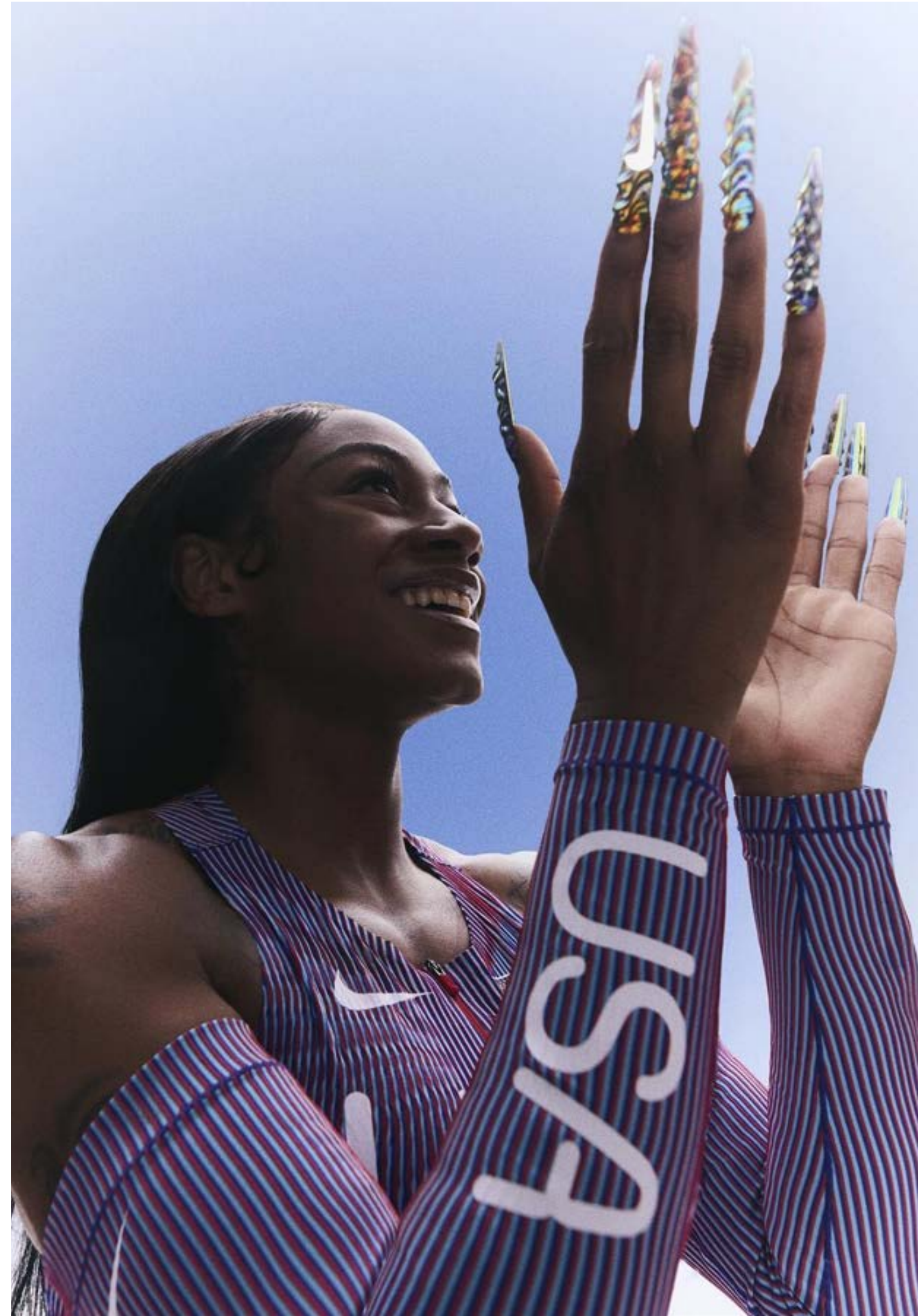
SET DESIGN



AD891 NIKE

Ryan Chappell (MOVEMENT DIRECTOR)
+ Suzie & Leo (PHOTOGRAPHERS) + Henri Pier (SET)

SET DESIGN



AD564 ATHLETICS FTWR

Henri Pier (SET)

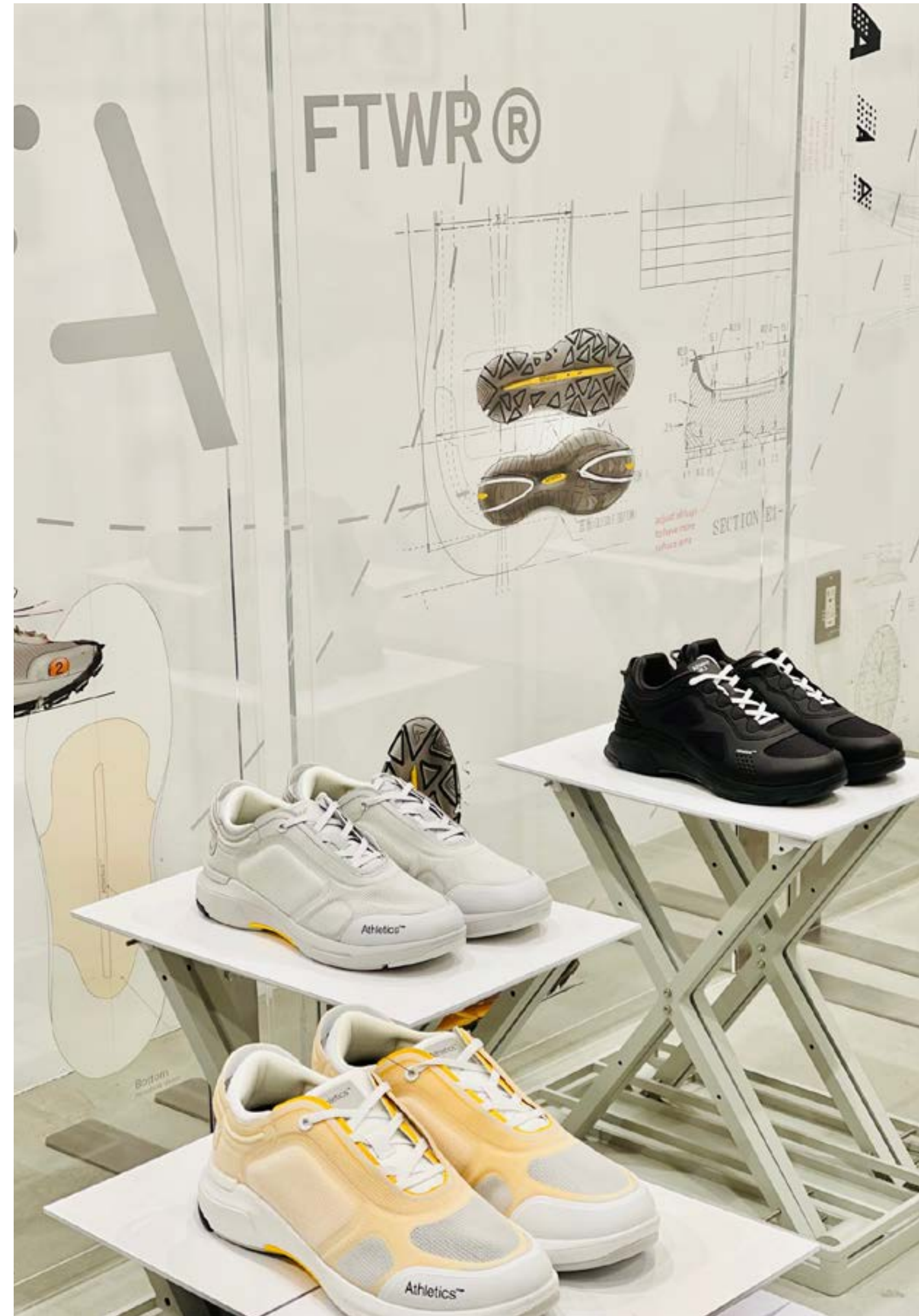
EVENTS + OBJECT



AD564 ATHLETICS FTWR

Henri Pier (SET)

EVENTS + OBJECT



AD347 INTERVIEW

Marc Goehring (STYLIST) + Pierre Ange Carlotti (PHOTOGRAPHER) + Henri Pier (SET)

SET DESIGN



AD347 INTERVIEW

Marc Goehring (STYLIST) + Pierre Ange Carlotti (PHOTOGRAPHER) + Henri Pier (SET)

SET DESIGN



Photographed by
PIERRE-ANGE
CARLOTTI

Styled by
MARC
GOEHRING

ACTOR.
 MODEL.
 PAPARAZZI MAGNET.
 HOLLYWOOD ROYALTY.
 TABLOID FIXATION.
 GEN Z ICON.
 CAT PERSON.

KEIRA KNIGHTLEY finds out what it's like being

ILY.

ROSE

EPP

AD827 SANDRO

Franck Durand (ART DIRECTOR) + Chris Rhodes
(PHOTOGRAPHER) + Henri Pier (SET)

SET DESIGN



AD827 SANDRO

Franck Durand (ART DIRECTOR) + Chris Rhodes
(PHOTOGRAPHER) + Henri Pier (SET)

SET DESIGN



AD832 PLASTER MAGAZINE

Finn Constantine (Creative Director) + Pol Taburet (ARTIST)
+ Dexter Navy (PHOTOGRAPHER) + Socle (CREATIVE &
DIGITAL STUDIO) + Lotti Projects (PROD) + Henri Pier
(SET)

SET DESIGN



AD832 PLASTER MAGAZINE

Finn Constantine (Creative Director) + Pol Taburet (ARTIST)
+ Dexter Navy (PHOTOGRAPHER) + Socle (CREATIVE &
DIGITAL STUDIO) + Lotti Projects (PROD) + Henri Pier
(SET)

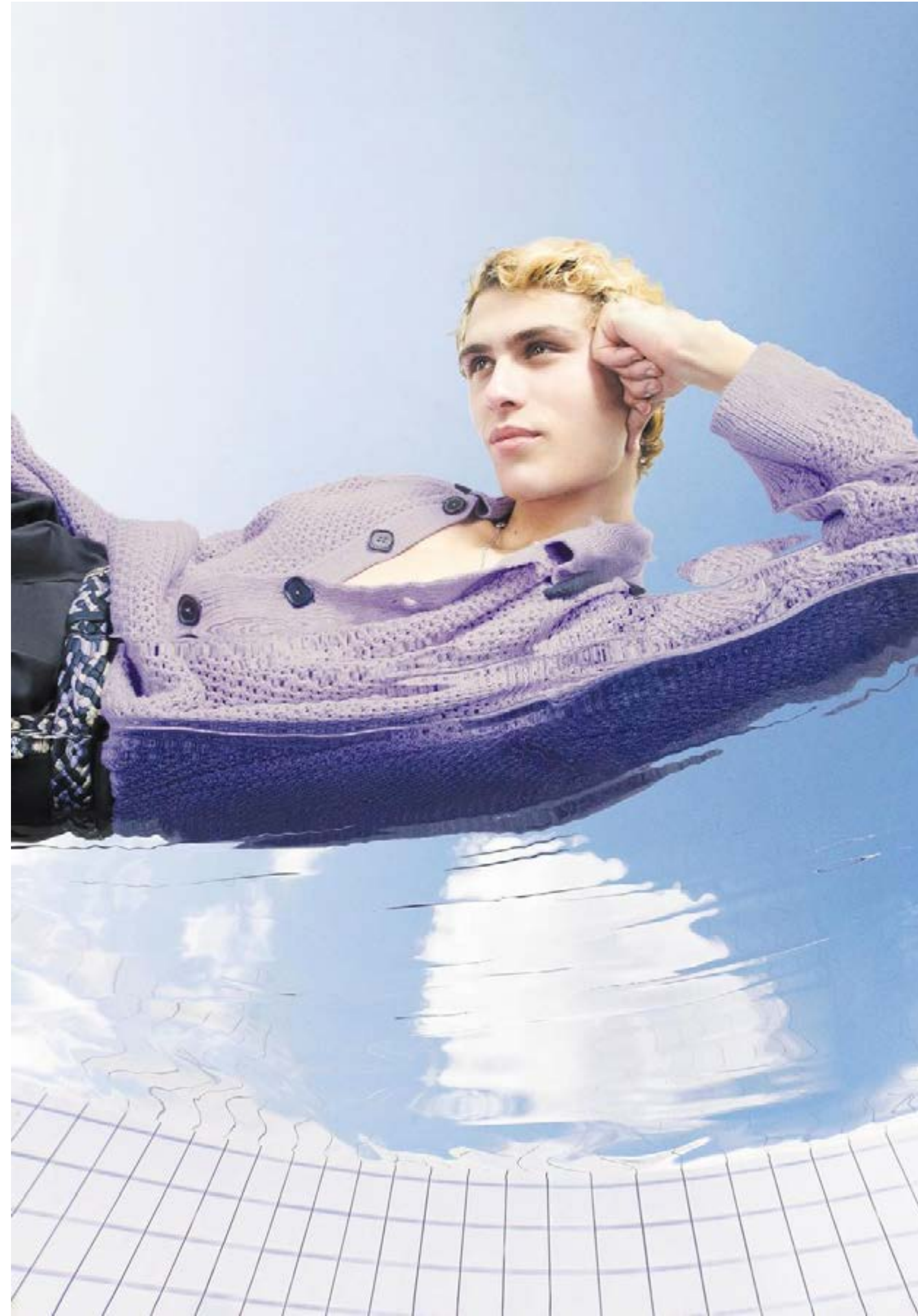
SET DESIGN



AD571 LE MONDE D'HERMÈS

Valentin Herfray (PHOTOGRAPHER) + Henri Pier (SET)

SET DESIGN



AP380 UNRELEASED

Henri Pier (SET)

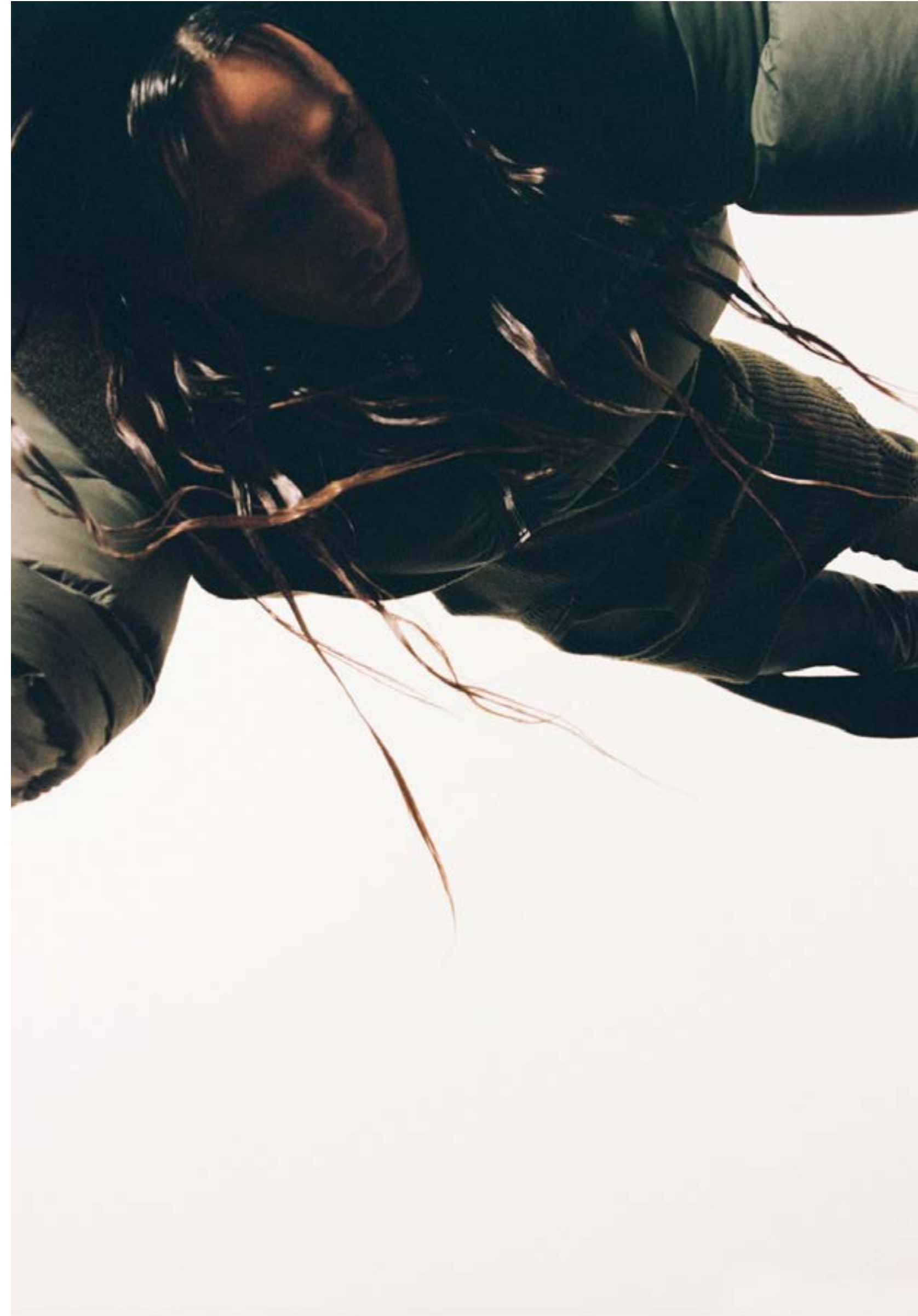
OBJECT DESIGN



AD371 VOGUE

Mathieu Rainalud (PHOTOGRAPHER) + Henri Pier (SET)

SET DESIGN

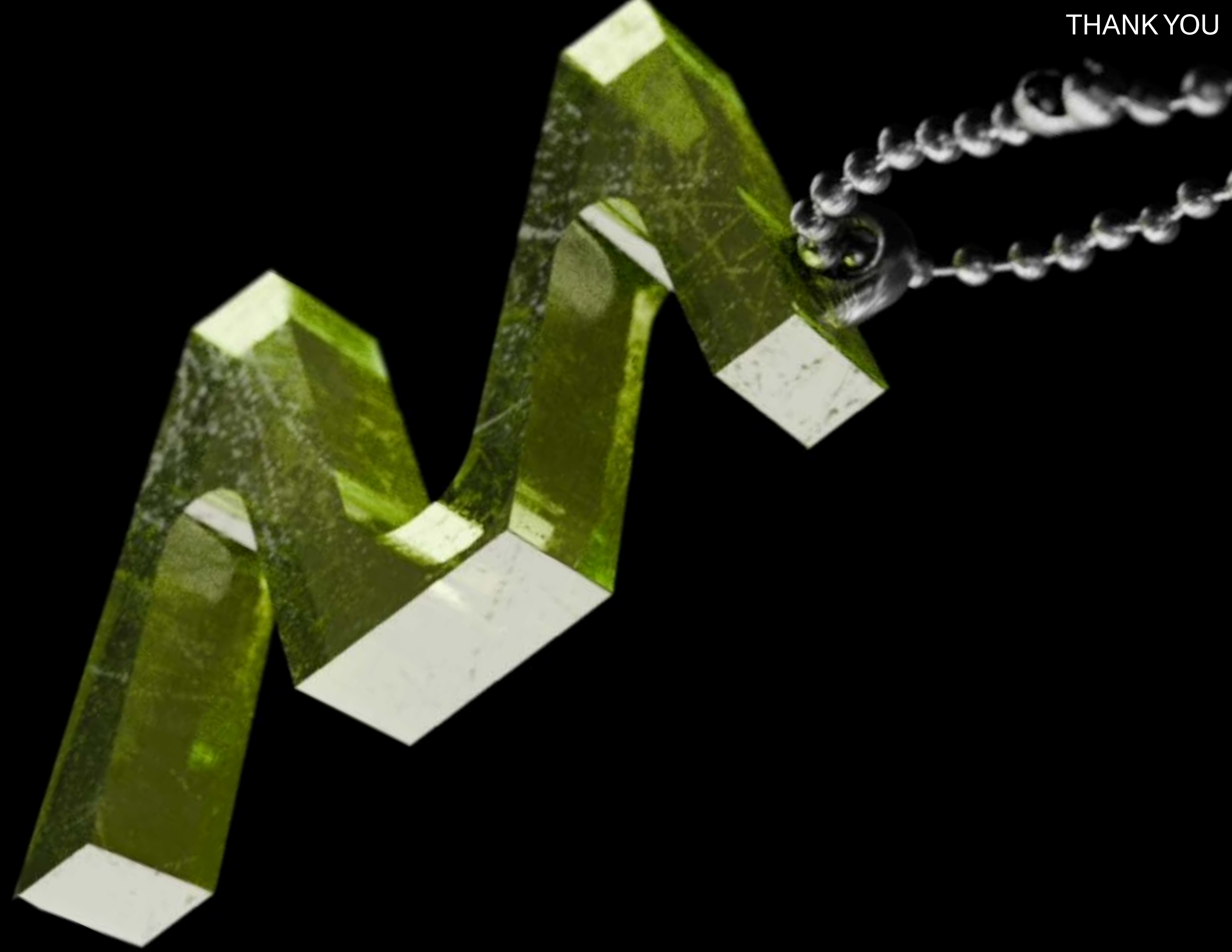


AD371 VOGUE

Mathieu Rainalud (PHOTOGRAPHER) + Henri Pier (SET)

SET DESIGN





WORLD+